

Marg Online Guide Line

Requirement:

1. Static IP
2. Broadband (Internet)
3. Server : Windows XP/Windows 2000 or above with 2 GB RAM
4. Before installation have to configure modem and open port 3389 and virtual

Installation:

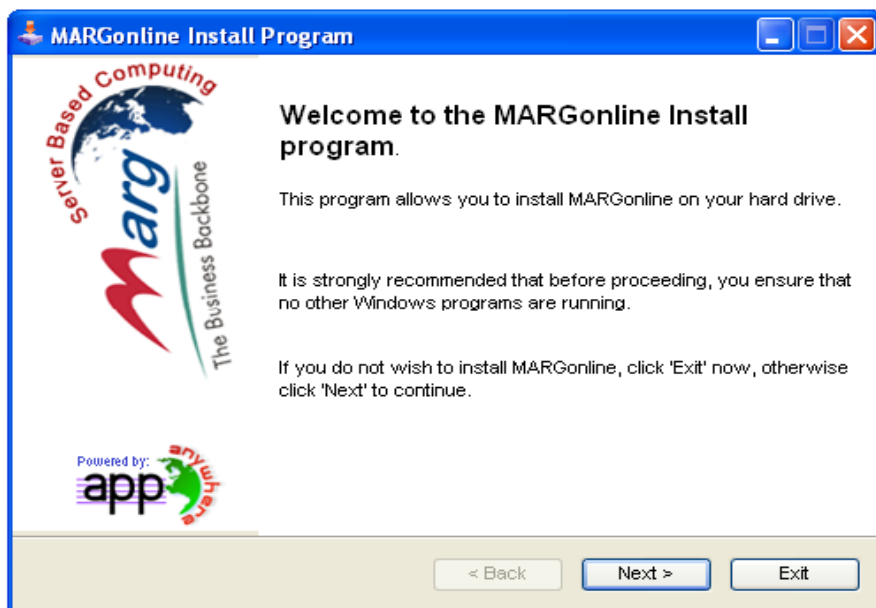
Marg Online Setup: –

1. Download setup from Marg Website - Download → MargUtility:

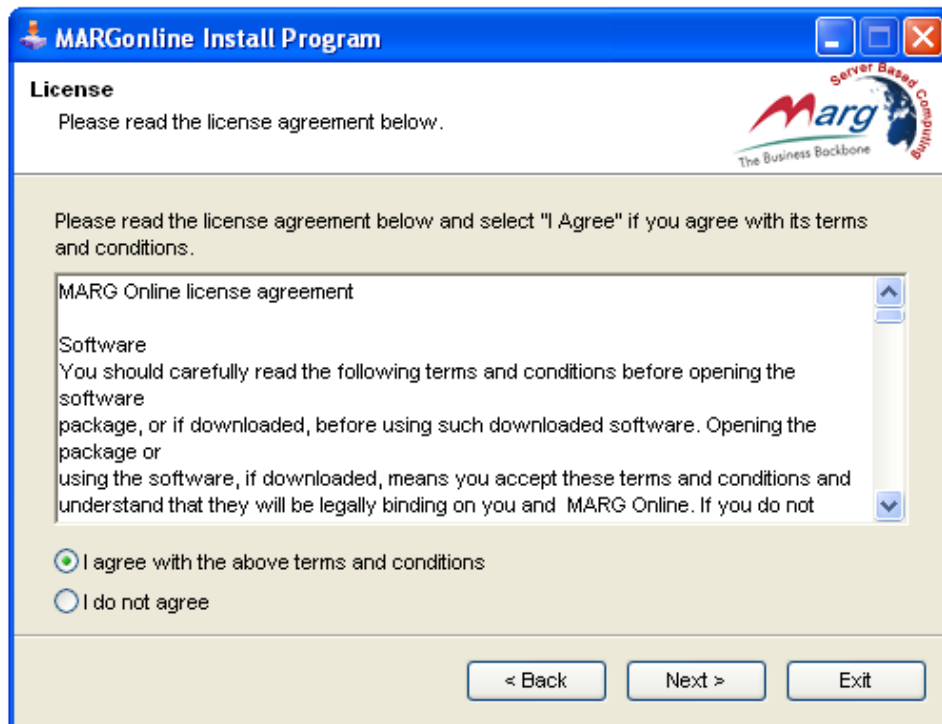


Download Marg Online

2. After download **Setup** file double click and run setup and click Next -

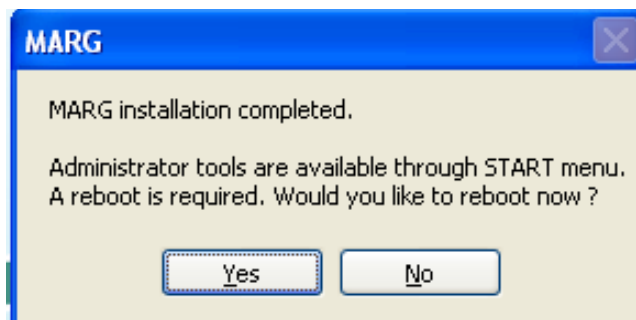


Marg Online Guide Line

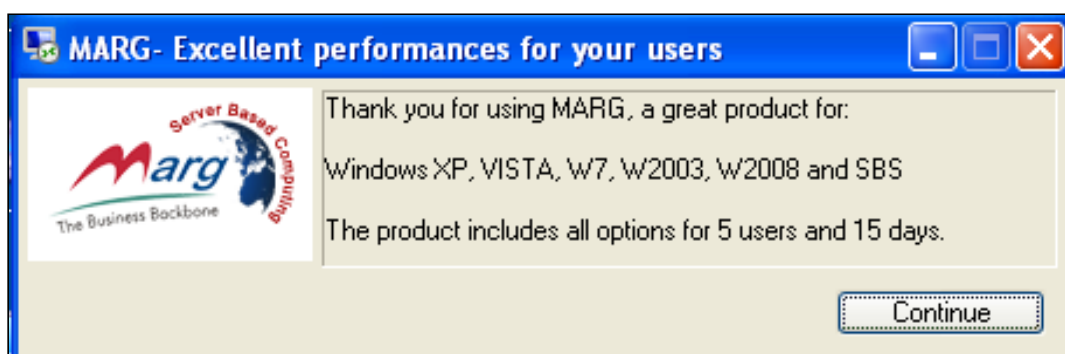


After Click next now message will appear:

“The destination directory doesn’t exist. Do you want to be create” Press Yes so Setup will be start after installation successfully this message will appear so re start the systems.



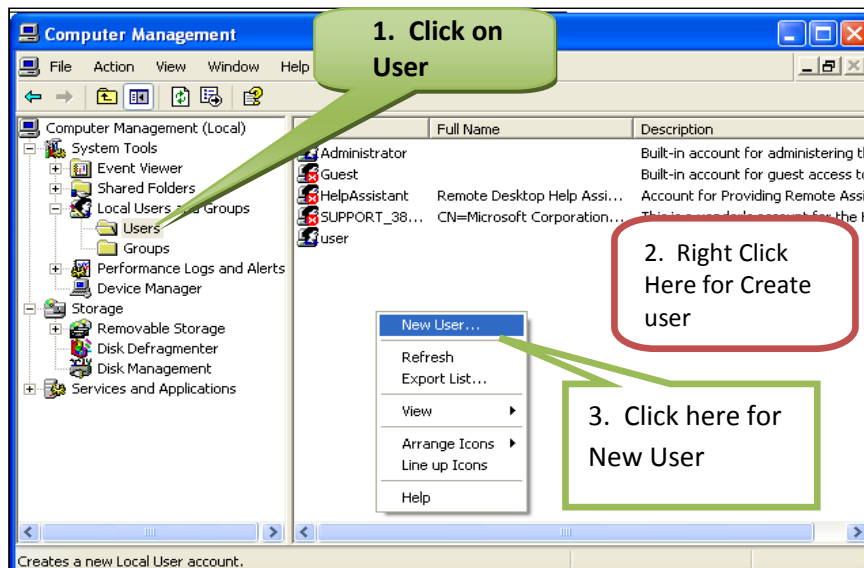
After Reboot System this message will appear Click on **Continue**



Marg Online Guide Line

How to create user at Server:

Right Click on My Computer and go to Manage this window will appear



Fill the User Name & Password in this window

The 'New User' dialog box contains the following fields and options:

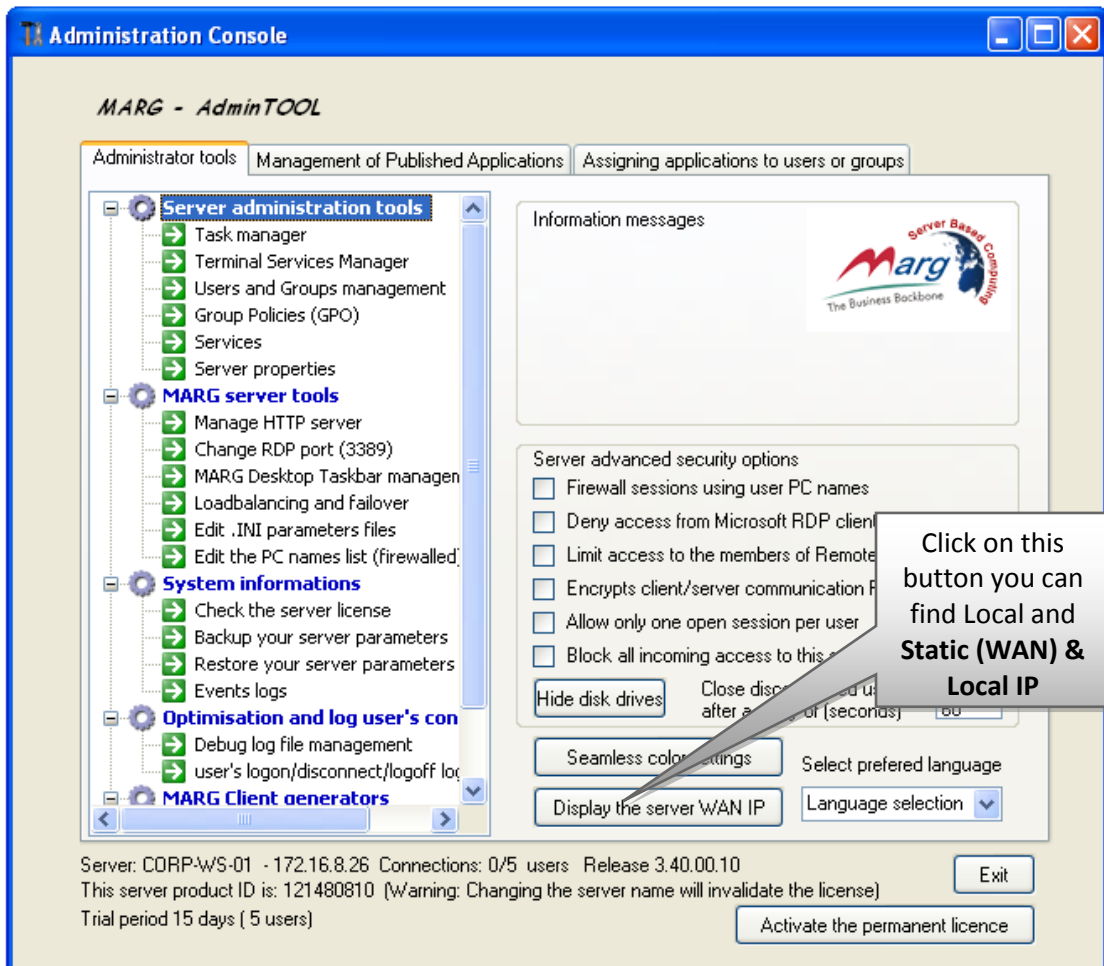
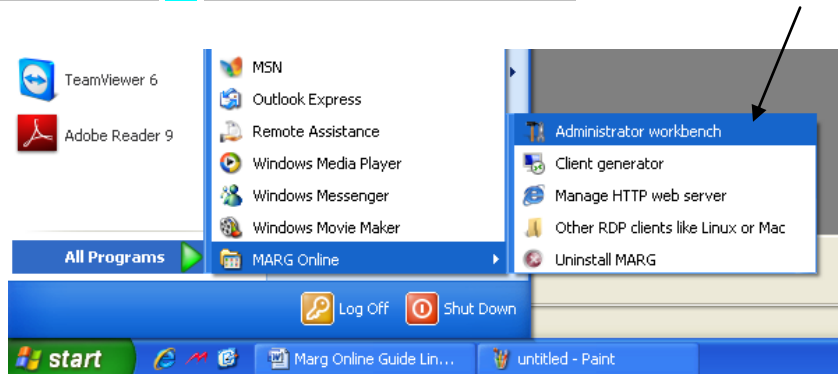
- User name:
- Full name:
- Description:
- Password:
- Confirm password:
- User must change password at next logon
- User cannot change password
- Password never expires
- Account is disabled

Buttons: Create, Close

Marg Online Guide Line

After that your user has been created this user name and password has to put while you Generate Exe via Client Generator.

Now Click: **Start** → **All Programs** → **Administrator workbenches**



Marg Online Guide Line

Administration Console

MARG - AdminTOOL

Administrator tools | Management of Published Applications | Assigning applications to users or groups

- Users and Groups management
 - Group Policies (GPO)
 - Services
 - Server properties
- MARG server tools**
 - Manage HTTP server
 - Change RDP port (3389)
 - MARG Desktop Taskbar managen
 - Loadbalancing and failover
 - Edit .INI parameters files
 - Edit the PC names list (firewalled)
- System informations**
 - Check the server license
 - Backup your server parameters
 - Restore your server parameters
 - Events logs
 - Optimisation and log user's con
 - Debug log file management
 - Server's logon/disconnect/logoff lo
- MARG Client generators**
 - Client Generator
 - Global parameters for generated

Information messages

Hiding disk drive will take effect after reboot

Server advanced security options

- Firewall sessions using user PC names
- Deny access from Microsoft RDP client
- Limit access to the members of Remote Desktop Users
- Encrypts client/server communication FIPS-Compliant
- Allow only one open session per user
- Block all incoming access to this server

Hide disk drives Close disconnected users after a delay of (seconds)

Seamless color settings

Display the server WAN IP

Server: CORP-WS-01 - 172.16.8.26 Connections: 0/5 users Release 3.40.00.10
 This server product ID is: 121480810 (Warning: Changing the server name will invalidate the license)
 Trial period 15 days (5 users)

Click on **Client Generator** for Create EXE

Windows Client Generator - v3.40.0.10

Remote Desktop Client generator

The generated client can connect to a Remote Desktop or a RemoteApp session. It can also manage the connection. Seven connection functionalities.

Server address: Port number: Domain name:

Logon: Password:

Local devices

- Disk
- Printers
- COM ports
- Smart cards
- USB devices
- Bi-directional sound

User experience

Remote Desktop Windows

- Full screen
- 800 x 600
- 1024 x 768
- 1280 x 1024

Remote Application Publishing

- Microsoft RemoteApp
- Seamless Remote Application

Advanced client security options

- Lock it on PC name
- Lock it on serial number

GO!

Other client usefull options

- Disable the user Microsoft firewall
- Do loadbalancing
- Use RDP5
- Use RDP6

SELECT ICON FILE FROM HERE

Put here Static IP

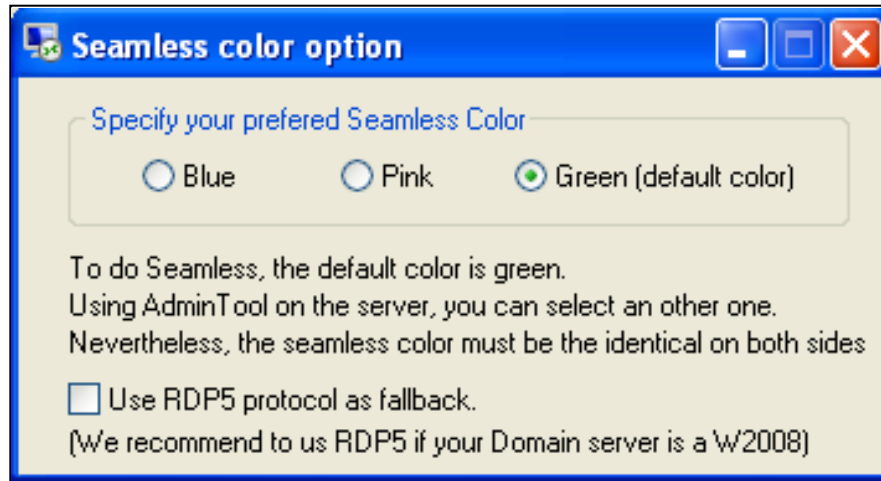
Enter here User Name

Enter here User Password

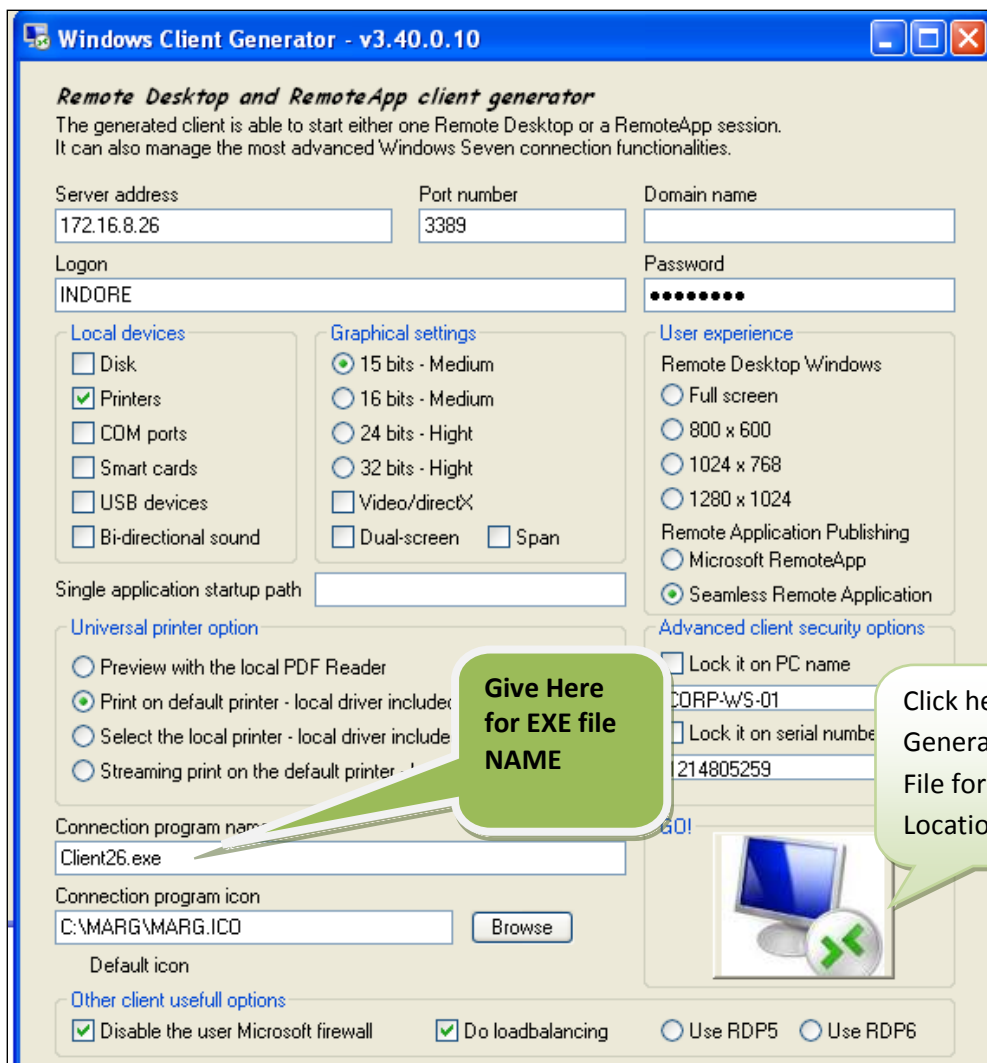
SELECT ICON FILE FROM HERE

Marg Online Guide Line

After that Click in Seamless Remote Application if you are going to create EXE for Windows XP and **Click on Check Box Use RDP5 PROTOCOL AS FALLBACK** and close these windows



Now **Click on Go Button** and EXE file will be Generate on your Desktop and send it location



Marg Online Guide Line

Administration Console

MARG - AdminTOOL

Administrator tools | Management of Published Applications | Assigning applications to users or groups

Published applications

- Microsoft Remote Desktop
- MARG Remote Taskbar
- FloatingPanel
- MS Calc

Buttons: Add, Remove, Run...

Display Name:

Path/Filename: Browse

Start Directory:

Command line option:

Launch this application maximized Assign this application to All Users

Launch this application minimized Launch and Hide this application

Save

Server: CORP-WS-01 - 172.16.8.26 Connections: 0/5 users Release 3.40.00.10
This server product ID is: 121480810 (Warning: Changing the server name will invalidate the license)
Trial period 15 days (5 users)

Exit Activate the permanent licence

Give Display Name and Marg Location Path & File Name and Click on Add Button and Click on Add Button then Marg has add in Publish Application

Administration Console

MARG - AdminTOOL

Administrator tools | Management of Published Applications | Assigning applications to users or groups

Application Control: You can assign applications to users or Groups' members and you have the choice between 3 possible wizzards. Select the most suitable one: Per user, Per Group or Drag and Drop

Option 1: Drag and Drop
Assign applications using a Drag and Drop graphical user interface
Drag and Drop applications

Option 2: assign per user
Assign applications to each users (local users) for Domain users edit AppControl.ini
Assign applications per User

Option 3: assign per group
Assign applications to Group members (Local or Domain groups)
Assign applications per Group

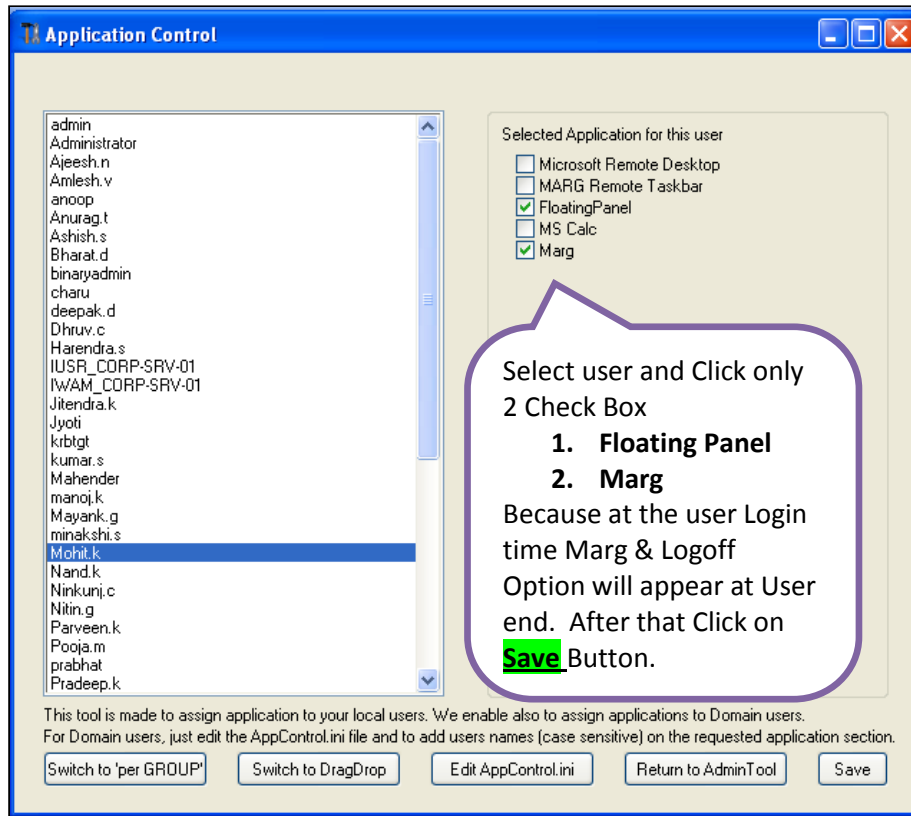
User client automatic update release option

Server: CORP-WS-01 - 172.16.8.26 Connections: 0/5 users Release 3.40.00.10
This server product ID is: 121480810 (Warning: Changing the server name will invalidate the license)
Trial period 15 days (5 users)

Exit Activate the permanent licence

Click Here for Assign Applications User wise

Marg Online Guide Line



Troubleshooting

1. If client EXE run and message found : **mstax.dll** not found then create short cut of exe and go to property type –RDP5
After inverted comma

